

THERAPIST COLLECTION // NEW FEET PLUS // 2026

MD Class 1

ADJUSTABLE FOOTWEAR WITH HARD ROCKER SOLE



CE 2017/745

291-34-6110/7110

Black leather · Extra high outer sole
Only sold as half pairs:
-6110 is left - 7110 is right
Last 1 A + C · Size: 38-47



CE 2017/745

162-81-110

Black leather
Last 4 · Size: 35-49
Half pairs (left/right):
362-81-6110/7110



CE 2017/745

99-63-110

Black leather
Last 1 A + C · Size: 36-48
Half pairs (left/right):
299-63-6110/7110



CE 2017/745

96-49-110

Black leather
Last 1 A · Size: 35-49
Half pairs (left/right):
296-49-6110/7110



CE 2017/745

61-36-110

Black leather
Last 3 · Size: 35-49
Half pairs (left/right):
261-36-6110/7110



81-97-210

Black leather w. OrthoStretch™
Last 4 · Size: 41-48

ADJUSTABLE FOOTWEAR



CE 2017/745

61-34-110

Black leather
Last B · Size: 35-49
Half pairs (left/right):
261-34-6110/7110



CE 2017/745

61-35-1110

Black textile
Last 2 · Size: 35-49
Half pairs (left/right):
261-35-6110/7110



CE 2017/745

81-73-110

Black leather
Last 2 · Size: 35-48
Half pairs (left/right):
281-73-6110/7110

LAST OVERVIEW



A

Last 1

Material: micro with PU
A: with hard rocker sole
B: without hard rocker sole
C: as A + 2 mm rubber plaqua



Last 2

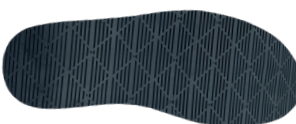
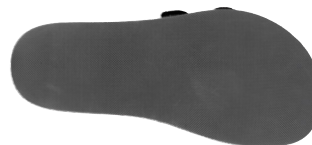
Material: micro with PU



B

Last 3

Material: Micro with PU
Hard rocker sole



C

Last 4

Material:
PU - grey area is antislip surface
Hard rocker sole

